



5Eleven DesignZ, LLC

Email: sales@5elevendesignz.com

Phone: 734-719-0311

Grill Guard Installation Guide

4044R, 4052R & 4066R

Thank you for your purchase! We want you to be completely satisfied with our products. If you have any questions or concerns, please reach out via the contact information above and we will do all that we can to assure your experience with us is a positive one.



Qty: 4 - M12 x
35mm Flanged
Head Screw



Qty: 4 - M12
Nylon Lock Nut



Qty: 4 - M10 x
25mm Carriage
Bolt



Qty: 4 - M10
Nylon Lock Nut

Required / suggested tools:

15mm wrench or socket wrench
16mm wrench or socket wrench
18mm wrench or socket wrench

Below is the process for installing the 511 grill guard on your tractor.

- 1) Although not always necessary for this installation, it is helpful to remove the loader from the tractor.
- 2) Place the upper 511 grill guard into the factory brush guard frame from the front side until the four flanges with the oval shaped holes line up with the 4 square holes in the sides of the factory brush guard.
- 3) Install the 4 carriage bolts from the outside through the factory brush guard's frame and the flange of the 511 guard followed by the lock nuts. Tighten the nuts.
- 4) From the front side, hold the lower 511 with the pointed portion up and large flange toward you and slide it between the back of factory guard's cross bar and the tractor's grill (Figure 1). As you move it up, you will need to rotate the pointed portion forward. If there is not enough room, the factory brush guard will either need to be removed or rotated forward slightly. Removal of the factory brush guard first requires removal of the loader.
 - a. In order to rotate the factory brush guard, locate the 6 bolts that attach it to the frame of the tractor. Remove the lower and rear 12mm bolts from each side of the frame indicated in yellow (Figure 2).
 - b. Loosen the 14mm bolts (1 on each side) indicated in red to allow the guard to be rotated (Figure 2).
 - c. Rotate the guard forward until there is enough room to install the lower 511 guard.
- 5) Install the 4 M12 screws from the back of the 511 lower guard through the back of the crossbar on the factory guard (Figure 3). Tighten each of the nuts.

- 6) If the guard were rotated as described in step 4, rotate the guard and reinstall the 4 bolts that were removed in step 4a and tighten them. Tighten each of the M14 bolts that were previously loosened.
- 7) Installation is now complete.



Figure 1

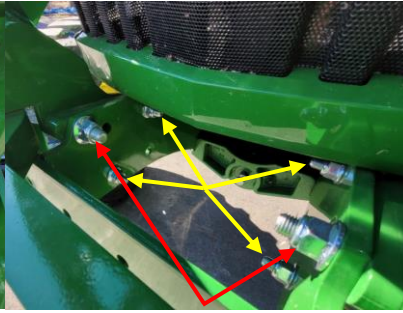


Figure 2



Figure 3



Completed installation